



- ☑ Tear free Woven weaving structure
- ☑ 5 mil heavy duty structure - puncture free
- ☑ Perfect for Hybrid: combined with Foam/Fiberglass
- ☑ Low E (5%) foil surface with 95% heat reflectivity
- ☑ Improves OTTV (Energy Optimization of Buildings' envelopes).
- ☑ Save money on installation with our 8.5' design
- ☑ All weather solution
- ☑ Smooth white finish

Woven core 8.5' super wide structure



## 8.5" wide RadWrap/HouseWrap AgriBarrier



- 1 One side reflective (95%)
- 2 one side white film with polyethylene woven reinforcement

### Product Information

Polyshield RadWrap foil/white, featuring low emittance (E=5%) and 95% heat reflectivity, is a versatile and perforated material with numerous applications. Whether used as in attic, or as house wrap, in agriculture buildings, as roof underlayment, or as a crawlspace floor covering, RadWrap proves its adaptability.



RadWrap R values *		Therma Resistance Values**
Attic/Roof ***	HEAT FLOW DOWN	R-12.46
	HEAT FLOW UP	R-2.17
Wall	HEAT FLOW HORIZONTAL	R-5.54

\* At least a 1" air space is required on foil side to achieve the R-Values quoted.  
 \*\* Depends on factors such as the building's interior, roof slope, direction of heat flow, and the size of attainable air gaps available when installing the products  
 \*\*\* Attic R value depending on installation. R value can be as high as 18 with 8" dead air space and heat flow down. For more details, please contact us 972-836-4829

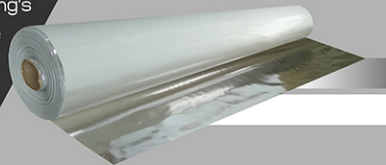
### Product Description

Polyshield RadWrap, featuring a low emittance rate of 5% and 95% heat reflectivity, is a versatile and perforated insulation material suitable for a variety of applications. Whether it's utilized as house wrap, within agricultural buildings, as roof underlayment, or as a covering for crawl spaces, RadWrap demonstrates its adaptability and efficiency.

As house wrap, RadWrap enhances air tightness, contributes additional R-Value to the building's envelope, and helps in reducing heat gain during summer months. It also plays a crucial role in minimizing condensation, thereby improving the overall efficiency of the insulation system. The perforated version of RadWrap is particularly effective when used in combination with mass insulation types like wool, foam, or fiberglass, offering a comprehensive insulation solution that meets a wide range of building requirements.

Moreover, the white polyethylene surface of RadWrap serves as an excellent material for washable ceilings, thanks to its highly reflective nature that reflects radiant heat instead of absorbing it. For different applications, an optional solid version of RadWrap is also available, offering flexibility and choice to meet specific insulation needs.

On top, the unique 8.5-foot design of this product offers an ideal solution for house wraps, significantly saving on labor and installation time. Its super strong reinforced structure ensures efficient installation with minimal distractions. This design choice not only optimizes the wrapping process but also enhances the overall durability and effectiveness of the installation, making it a highly practical option for builders and homeowners alike seeking reliable and time-efficient insulation solutions



- 1 One side reflective (95%)
- 2 one side white film with polyethylene woven reinforcement

### Product Specifications

Standard Roll Size:	8.5' x 125', 66' x 182', 48' x 250'
Standard roll Weight (lbs) +/-5%:	24 lbs
Emittance (Metalized Foil Side):	5%
Reflectivity:	95%
Permeability ASTM E-96-5:	6.29 Perms
Resistance to Fungi ASTM C1338-08:	PASS - No Growth
Flame Spread, Smoke Development, and Fire Rating:	Class A / Class 1





**Radiant Barrier USA**  
Innovating Reflective Technology

# 8.5' wide RadWrap/HouseWrap AgriBarrier



## Available finish :

Silver

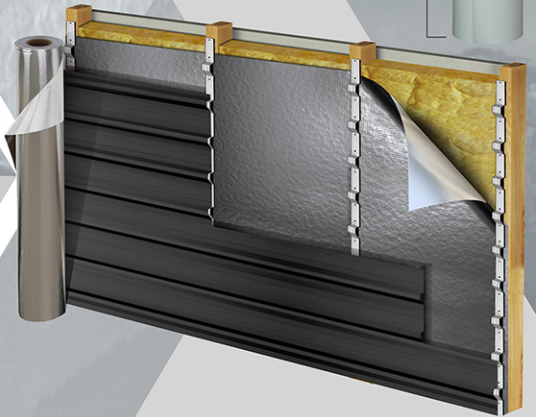
White Woven

Radwrap  
Mass insulation



First  
Only  
Number

APPLICATION IDEAS



up to 8.5"



**BE ACTIVE!**  
USE REFLECTIVE INSULATION NOW



**95%**

REFLECT 95% OF RADIANT HEAT (SILVER SIDE)



Width	Length	Ft <sup>2</sup> coverage	Type
8.5'	125'	1062 ft <sup>2</sup>	Perforated
66"	182'	1000 ft <sup>2</sup>	Perforated /Solid
48"	250'	1000 ft <sup>2</sup>	Perforated /Solid